

# QCOM User Guide

Version: 1.2

Date: 2024-12-17

Status: Released



At Quectel, our aim is to provide timely and comprehensive services to our customers. If you require any assistance, please contact our headquarters:

**Quectel Wireless Solutions Co., Ltd.**

Building 5, Shanghai Business Park Phase III (Area B), No.1016 Tianlin Road, Minhang District, Shanghai 200233, China

Tel: +86 21 5108 6236

Email: [info@quectel.com](mailto:info@quectel.com)

**Or our local offices. For more information, please visit:**

<http://www.quectel.com/support/sales.htm>.

**For technical support, or to report documentation errors, please visit:**

<http://www.quectel.com/support/technical.htm>.

Or email us at: [support@quectel.com](mailto:support@quectel.com).

## Legal Notices

We offer information as a service to you. The provided information is based on your requirements and we make every effort to ensure its quality. You agree that you are responsible for using independent analysis and evaluation in designing intended products, and we provide reference designs for illustrative purposes only. Before using any hardware, software or service guided by this document, please read this notice carefully. Even though we employ commercially reasonable efforts to provide the best possible experience, you hereby acknowledge and agree that this document and related services hereunder are provided to you on an “as available” basis. We may revise or restate this document from time to time at our sole discretion without any prior notice to you.

## Use and Disclosure Restrictions

### License Agreements

Documents and information provided by us shall be kept confidential, unless specific permission is granted. They shall not be accessed or used for any purpose except as expressly provided herein.

### Copyright

Our and third-party products hereunder may contain copyrighted material. Such copyrighted material shall not be copied, reproduced, distributed, merged, published, translated, or modified without prior written consent. We and the third party have exclusive rights over copyrighted material. No license shall be granted or conveyed under any patents, copyrights, trademarks, or service mark rights. To avoid ambiguities, purchasing in any form cannot be deemed as granting a license other than the normal non-exclusive, royalty-free license to use the material. We reserve the right to take legal action for noncompliance with abovementioned requirements, unauthorized use, or other illegal or malicious use of the material.

## Trademarks

Except as otherwise set forth herein, nothing in this document shall be construed as conferring any rights to use any trademark, trade name or name, abbreviation, or counterfeit product thereof owned by Quectel or any third party in advertising, publicity, or other aspects.

## Third-Party Rights

This document may refer to hardware, software and/or documentation owned by one or more third parties ("third-party materials"). Use of such third-party materials shall be governed by all restrictions and obligations applicable thereto.

We make no warranty or representation, either express or implied, regarding the third-party materials, including but not limited to any implied or statutory, warranties of merchantability or fitness for a particular purpose, quiet enjoyment, system integration, information accuracy, and non-infringement of any third-party intellectual property rights with regard to the licensed technology or use thereof. Nothing herein constitutes a representation or warranty by us to either develop, enhance, modify, distribute, market, sell, offer for sale, or otherwise maintain production of any our products or any other hardware, software, device, tool, information, or product. We moreover disclaim any and all warranties arising from the course of dealing or usage of trade.

## Privacy Policy

To implement module functionality, certain device data are uploaded to Quectel's or third-party's servers, including carriers, chipset suppliers or customer-designated servers. Quectel, strictly abiding by the relevant laws and regulations, shall retain, use, disclose or otherwise process relevant data for the purpose of performing the service only or as permitted by applicable laws. Before data interaction with third parties, please be informed of their privacy and data security policy.

## Disclaimer

- a) We acknowledge no liability for any injury or damage arising from the reliance upon the information.
- b) We shall bear no liability resulting from any inaccuracies or omissions, or from the use of the information contained herein.
- c) While we have made every effort to ensure that the functions and features under development are free from errors, it is possible that they could contain errors, inaccuracies, and omissions. Unless otherwise provided by valid agreement, we make no warranties of any kind, either implied or express, and exclude all liability for any loss or damage suffered in connection with the use of features and functions under development, to the maximum extent permitted by law, regardless of whether such loss or damage may have been foreseeable.
- d) We are not responsible for the accessibility, safety, accuracy, availability, legality, or completeness of information, advertising, commercial offers, products, services, and materials on third-party websites and third-party resources.

**Copyright © Quectel Wireless Solutions Co., Ltd. 2024. All rights reserved.**

# About the Document

## Revision History

Version	Date	Author	Description
1.0	2010-12-21	Walter LI	Initial
1.1	2015-03-30	Harvey HE	Updated QCOM version to 1.6
1.2	2024-12-17	Bruce LI	<ol style="list-style-type: none"><li>1. Updated QCOM version to 1.8.</li><li>2. Updated the supported operating systems; Added the applicable modules: LTE-A and 5G modules (Chapter 1).</li><li>3. Updated the field "View File" to "Show\r\n" (Chapter 2.3).</li><li>4. Added "Clear All Commands" field description (Chapter 2.4).</li></ol>

## Contents

About the Document.....	3
Contents .....	4
Table Index .....	5
Figure Index .....	6
<b>1 Introduction .....</b>	<b>7</b>
<b>2 Tool Usage .....</b>	<b>8</b>
2.1. Configure COM Port .....	9
2.2. Open and Close COM Port .....	10
2.3. Send Data .....	11
2.4. Send Data Continuously .....	12
<b>3 Appendix Reference .....</b>	<b>14</b>

**Table Index**

Table 1: Configuration Items In the "Operation" Partition.....11

Table 2: Configuration Items In the "Command List "Partition ..... 12

Table 3: Terms and Abbreviations ..... 14

**Figure Index**

Figure 1: Function Partitions ..... 8

Figure 2: Select COM Port ..... 9

Figure 3: Select Baudrate ..... 9

Figure 4: Other Parameters Configuration..... 9

Figure 5: Open COM Port ..... 10

Figure 6: Close COM Port..... 10

Figure 7: Send Data .....11

Figure 8: Send Data Continuously ..... 12

# 1 Introduction

QCOM is a serial port debugging and AT command set interaction tool provided by Quectel, which is enable to view NEMA data scenario. This document mainly introduces how to send and receive data through a serial port with the tool.

The tool can run without actual installation, and it supports the following operating systems:

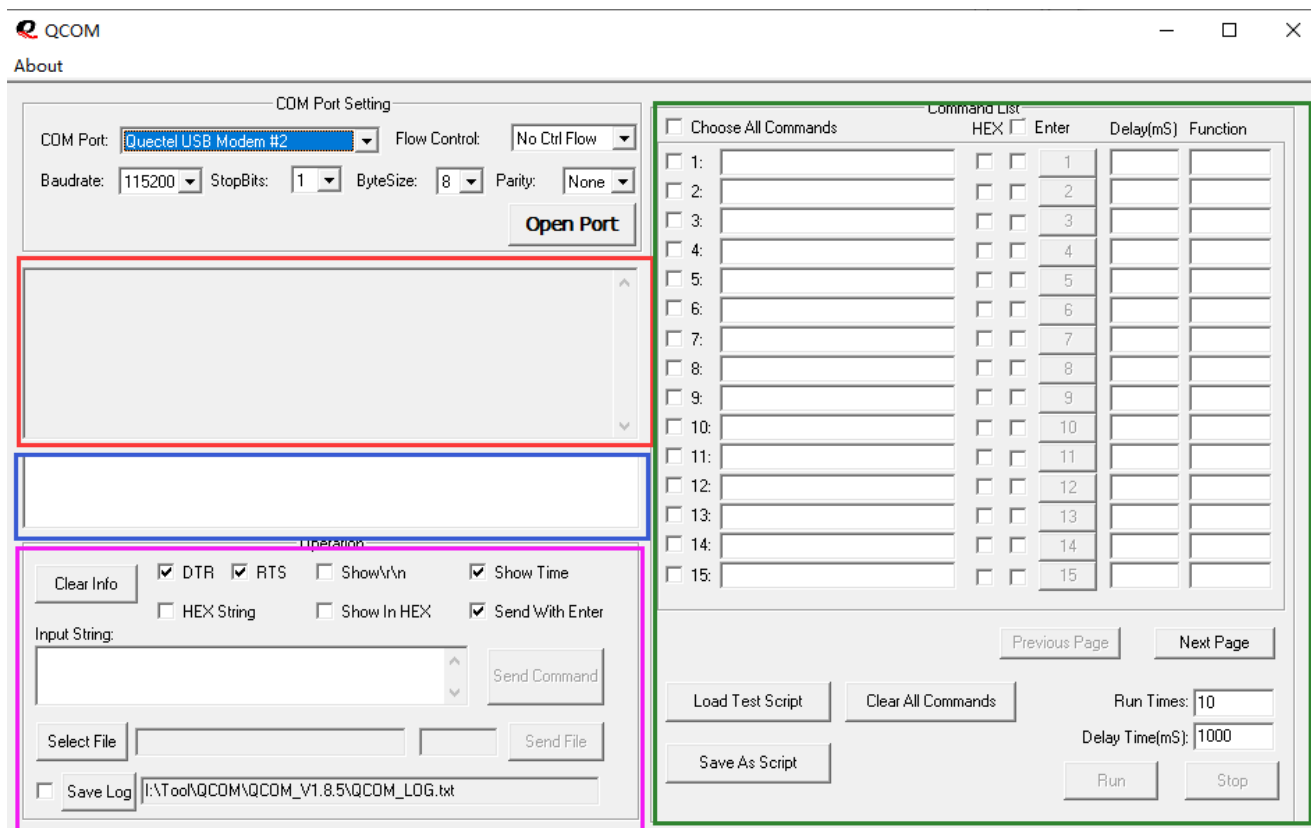
- Windows 10
- Windows 11

This document is applicable to all Quectel GSM, WCDMA, LTE Standard, LTE-A and 5G modules.



## 2 Tool Usage

The main function partitions in the tool interface are displayed below:



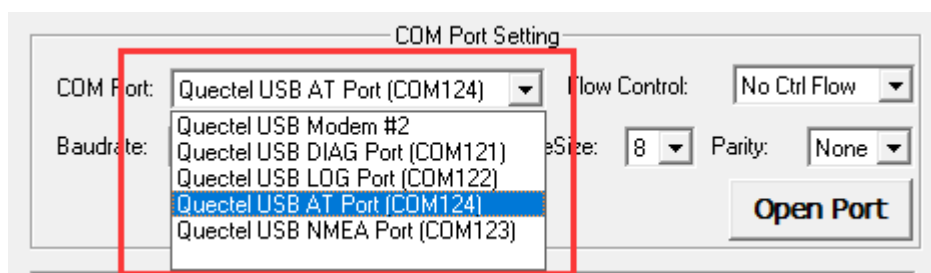
**Figure 1: Function Partitions**

- The received data is displayed in the **red** partition.
- The status information is displayed in the **blue** partition.
- Data and files are sent in the **purple** partition.
- Data is sent continuously in the **green** partition.

## 2.1. Configure COM Port

- **COM Port**

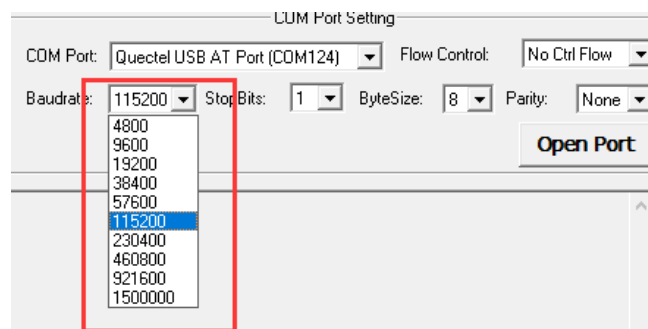
Check the port information through "Computer Management" → "Device Manager" according to the connection between the PC and the device for the "COM Port" item and select the corresponding serial port in the drop-down list.



**Figure 2: Select COM Port**

- **Baudrate**

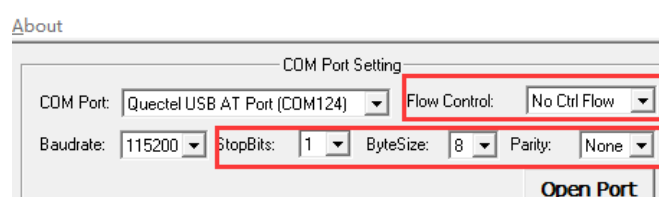
Select an appropriate baudrate.



**Figure 3: Select Baudrate**

- **Other Parameters Configuration of COM Port**

Select appropriate stop bits, parity, byte size, and flow control, for example:



**Figure 4: Other Parameters Configuration**

## 2.2. Open and Close COM Port

- **Open COM Port**

Click "**Open Port**" to open the selected COM port.

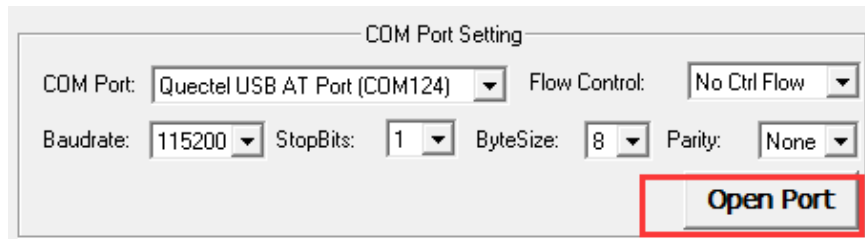


Figure 5: Open COM Port

- **Close COM Port**

Click "**Close Port**" to close the selected COM port.

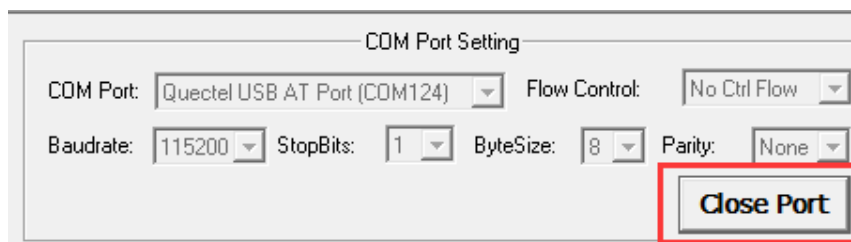
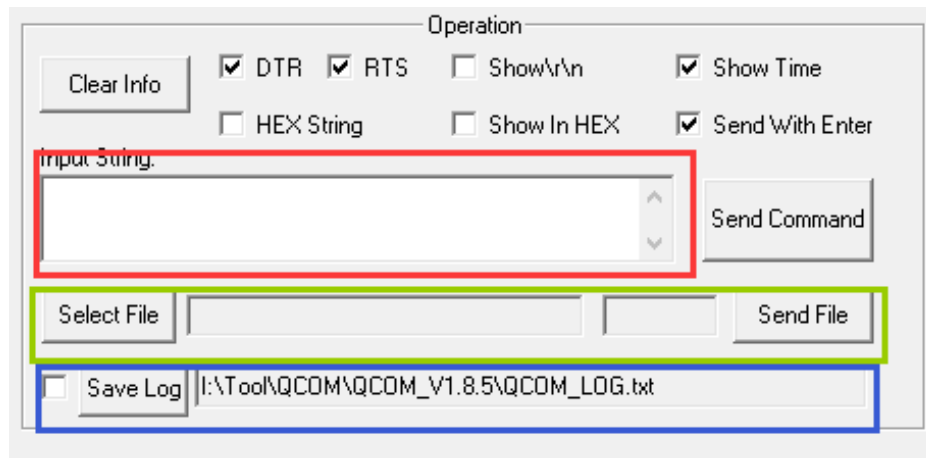


Figure 6: Close COM Port

## 2.3. Send Data



**Figure 7: Send Data**

The functions in the "Operation" partition are listed below:

- Input the data to be sent in the **red** partition.
- Select a needed file and send the whole file in the **green** partition.
- Save the received data as a log file in the **blue** partition.

**Table 1: Configuration Items In the "Operation" Partition**

Item	Description
<b>DTR</b>	Enable/Disable the DTR pin of the COM port.
<b>RTS</b>	Enable/Disable the RTS pin of the COM port.
<b>Show\r\n</b>	Show the "\r\n" information of the original data in the data display partition.
<b>Show Time</b>	Show the time of each received data.
<b>HEX String</b>	The input string is HEX string.
<b>Show In HEX</b>	Display the received data in HEX.
<b>Send With Enter</b>	Send data by pressing " <b>Enter</b> " on the keyboard.
<b>Clear Info</b>	Clear all received data and status information.
<b>Send Command</b>	Start to send the data you input.
<b>Select File</b>	Select the file to be sent.

**Send File**

Start to send the selected file.

**Save Log**

Select the path to save the log file.

## 2.4. Send Data Continuously

**Figure 8: Send Data Continuously**

The functions in the "Command List" partition are listed below:

- Select the data to be sent in the **red** partition.
- Input the data to be sent in the **blue** partition.
- Start to send data in the **green** partition.

**Table 2: Configuration Items In the "Command List "Partition**

Item	Description
Choose All Commands	Select all available commands to be sent.

---

<b>HEX</b>	The input string is HEX string.
<b>Enter</b>	Send data by pressing " <b>Enter</b> " on the keyboard.
<b>Delay</b>	Delay time for each data.
<b>Function</b>	Description of available commands.
<b>Previous Page/Next Page</b>	Paginate the available commands.
<b>Run Times</b>	The times of sending all selected data continuously.
<b>Delay Time</b>	Default delay time.
<b>Run</b>	Start to send all selected data continuously.
<b>Stop</b>	Stop sending all selected data continuously.
<b>Load Test Script</b>	Load data and configure it from an <i>ini</i> file.
<b>Clear All Commands</b>	Clear all inputted commands.
<b>Save As Script</b>	Save all the data to a file with <i>.ini</i> suffix.

---

## 3 Appendix Reference

**Table 3: Terms and Abbreviations**

Abbreviation	Description
NEMA	(National Marine Electronics Association) 0183 Interface Standard
PC	Personal Computer
DTR	Data Terminal Ready
RTS	Request to Send
HEX	Hexadecimal